

THE EMPYREAN™  
Paradise Regained

Grandé



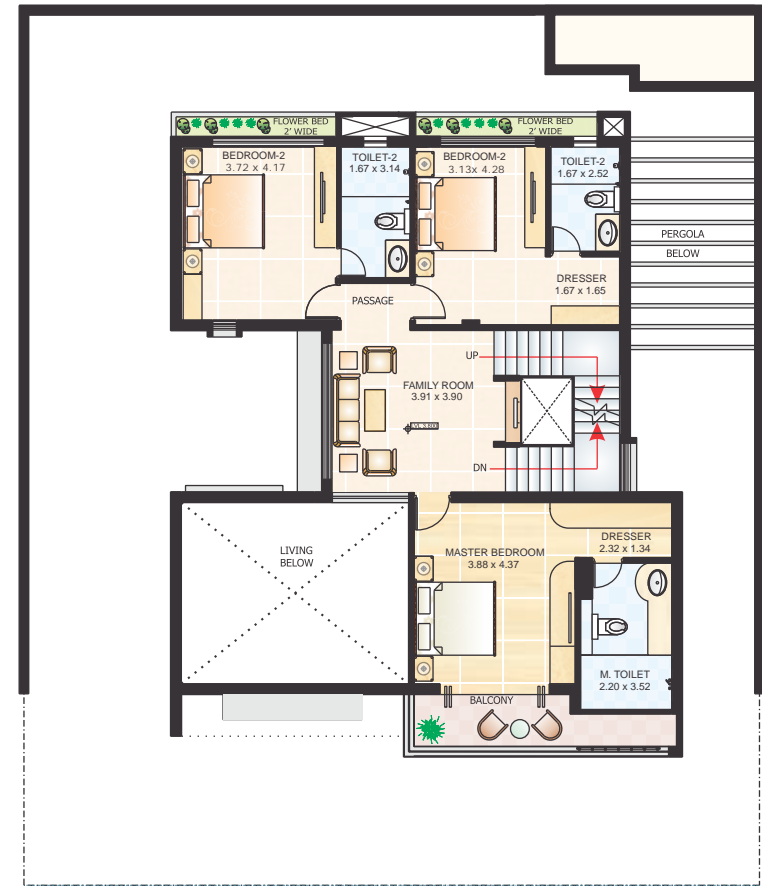
eternity villa

Plot Area	4346 Sqft
Unit Area	3444 Sqft
Carpet Area	2705 Sqft
Carpet Area with Balcony	2786 Sqft
Terrace Area	1152 Sqft

1 ft = 0.304 m and 1 Sqft = 0.093 Sqm

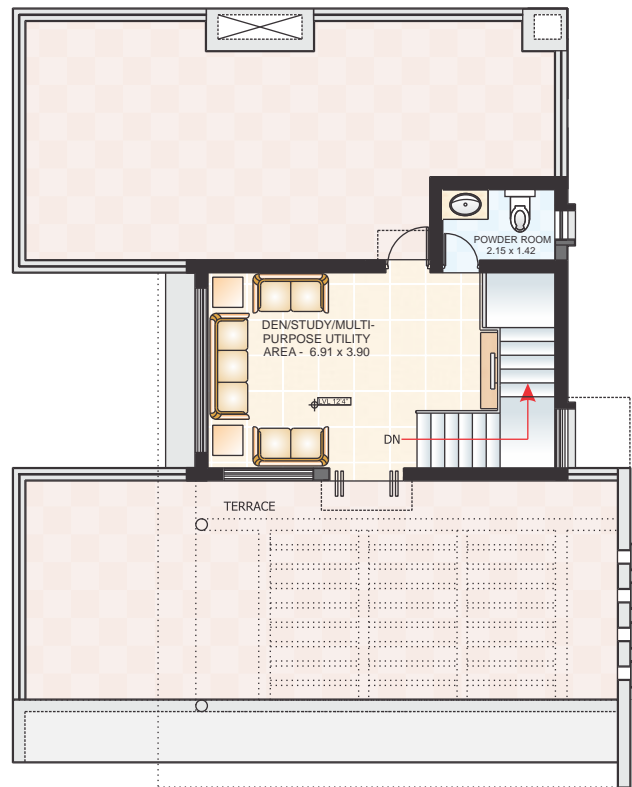


GROUND FLOOR PLAN



FIRST FLOOR PLAN

## key features



SECOND FLOOR PLAN

- ❧ The ultimate word in luxury, this very premium villa is built on various sizes to suit your lifestyle.
- ❧ An attached personal dip pool and a semi enclosed internal courtyard open to sky, adds to the beauty of the villa.
- ❧ The unit, with terrace area of 1152 sqft, has four spacious bedrooms with attached bathrooms, a living and a dining area, a family room, a study/den, a pooja room, a powder room and a servant quarter.
- ❧ The family room at the upper level is overlooking the 21 ft. high living room enhancing the flow of spaces and creating openness.
- ❧ Spaces for 3 car parks are planned within.
- ❧ The semi-covered terrace area acts like a beautiful barbeque lounge in this vaastu compliant residential unit.

# specifications

SPECIFICATIONS	ETERNITY VILLA	TOWNSHIP AMENITIES	
<b>WALL FINISH</b>		<b>ROAD</b>	Central Boulevard, Concrete/Asphalt, Footpaths & curbs (Pitched with Curbstones)
<b>INTERNAL</b>	Acrylic Emulsion, POP Punning for drawing and dining	<b>OPEN SPACES</b>	Designers Landscapes, Pitched Walkways, Joggers Track, Parks, Sitting Pavilions
<b>EXTERNAL</b>	Stone cladding, texture paint	<b>WATER SUPPLY</b>	Dedicated System, Potable Water supply, quality as per WHO standards
<b>SERVANT ROOM</b>	Oil bound distemper	<b>WASTE WATER</b>	Dedicated Treatment System, Recirculation System
<b>FLOORINGS</b>		<b>ELECTRICITY MAINS</b>	Dedicated Sub-Station, Underground Cabling
<b>LIVING/ DINING</b>	Large vitrified tiles	<b>ELECT. BACKUP</b>	DG Sets backup supply for common areas
<b>BEDROOM</b>	Wooden laminated floorings for master bedroom, Vitrified tiles for other rooms	<b>GAS</b>	LPG reticulated supply system
<b>SERVANT ROOM</b>	Ceramic tiles	<b>STREET LIGHTING</b>	Adequate street lights on all roads
<b>TERRACE</b>	Light Colour Anti-skid Tiles	<b>SECURITY</b>	Gated community, Guard room, CCTV system
<b>KITCHEN</b>		<b>CLUB HOUSE</b>	Restaurant, Gymnasium, Tennis Courts, Activities room, Multi purpose hall, Swimming pool
<b>FLOOR</b>	Large Vitrified Tiles	<b>SHOPPING</b>	Neighbourhood Daily need shopping center
<b>DADO</b>	Vitrified Tiles as per design	<b>COMMUNICATION</b>	Internal Cabling, Points in all rooms, Network Points, Provision of dish connectivity
<b>PLATFORMS</b>	Granite stone		
<b>TOILETS</b>			
<b>FLOOR</b>	Anti-skid Ceramic tiles		
<b>DADO</b>	Ceramic tiles		
<b>FITTINGS</b>	Granite Counter (as required), Ceramic fixtures, CP fitting		
<b>DOORS</b>			
<b>MAIN DOORS</b>	Teakwood frame, wood panelled door, brass fitting		
<b>INTERNAL DOORS</b>	Wooden frame, Veneer flushed door		
<b>BATHROOMS</b>	PVC frames, laminated flush doors		
<b>WINDOWS</b>	Anodised Aluminium window with plain glass		
<b>ELECTRICAL</b>	Concealed PVC conduits with copper wiring and MCBs, ELCBs etc as required		



Maha RERA Registration No.: P5050001342

<https://maharera.mahaonline.gov.in>



FIRE ARCOR INFRASTRUCTURE PVT. LTD.  
An ISO 9001:2008 Company

120/2, Kothewada, Nagpur, Maharashtra. | Tel.: 07104 - 669800  
www.empyreannagpur.com | e-mail : sales@firearcor.com

Disclaimer: The contents of this insert are purely conceptual and have no legal binding on the developer.  
The developer reserves the right to amend the concepts, layouts, plans, dimensions, elevations etc. without notice or intimation.